

HJ-CM Series Mobile Charging Cabinet Operation Guide



CONTACT US

HAIJIE Education

Zhongjie Industrial Zones of Bohai New Developed Area, Cangzhou, Hebei Province, China.

TEL:+86 317 5480 220

Email: sales@hajjie.net

Hebei Hajjie Modern Educational Equipment CO.,Ltd.



statement

Welcome to use our mobile charging cabinet products, you will get high-performance equipment and perfect after-sales service. Please read the instruction manual carefully before use so that the equipment can be used correctly.

Definition

Mobile charging cabinet---a portable centralized charging system for laptops, tablets, chromebooks and other devices including an intelligent power management system.

Safety

Please read the following simple usage guidelines. Violating these guidelines may lead to danger or break the law. Read the complete user guide for details.

Safe Boot

Do not connect the power immediately when the device is wet or has just been moved out of a cold environment.

Interference

All wireless devices inside the device may be interfered, affecting performance.

Qualified Service

Only qualified service personnel are allowed to install or maintain this product.

Accessories and power supply

Be sure to use approved accessories and (single-phase three-wire plug, the third end is grounded) power supply. Do not connect incompatible products.

Waterproof

This device is not waterproof. Please keep it dry.

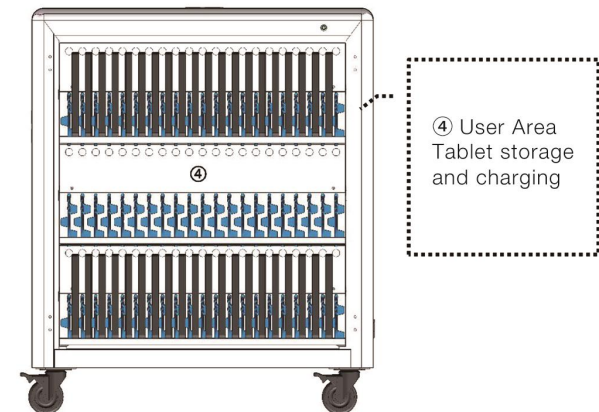
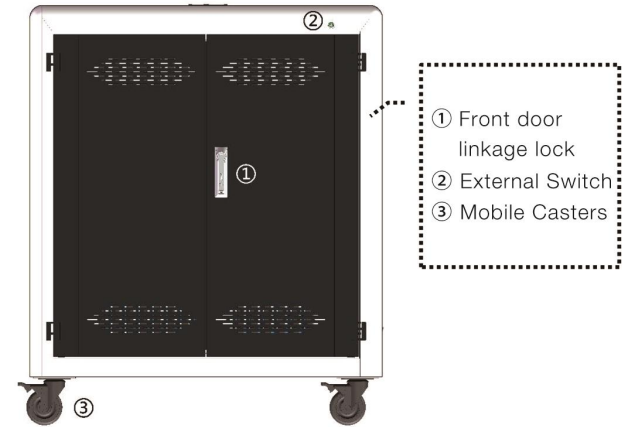
Fireproof

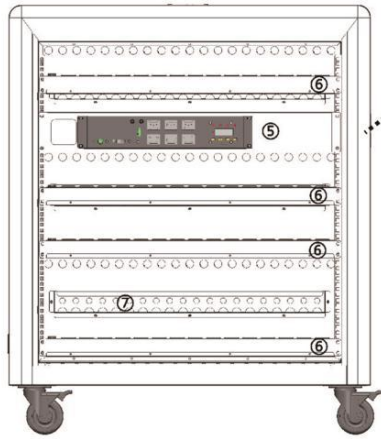
The fire resistance of this equipment is average, please do not approach the fire source.

Corrosion Resistance

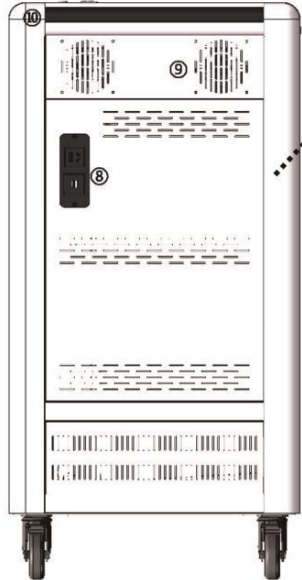
This equipment is mainly composed of metal materials, please do not corrode with acid or alkali.

Analysis of the whole charging cart: (take CM09 as an example)





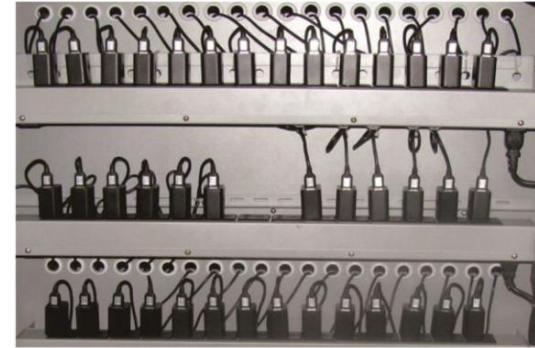
- ⑤ Sequence in time power
- ⑥ Charging socket
- ⑦ Wire basket



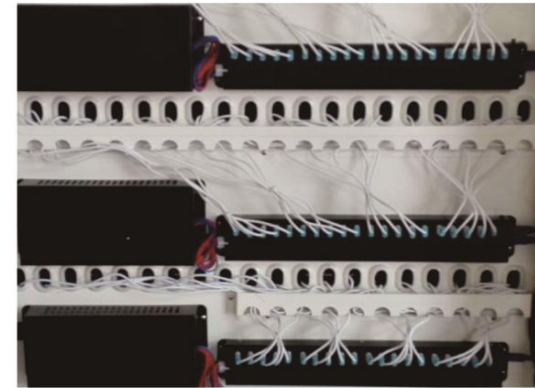
- ⑧ External socket
- ⑨ Fans
- ⑩ Handrail

Key Operation Instructions

Three charging modes(Power socket power supply/USB power supply/USB power supply & data synchronization)



Power supply from power socket (output voltage 220V)



USB power supply (&synchronization) (output voltage 5V)

USB cable Bobbin



Switch door lock



Open the door lock



Close the door lock

Caster lock



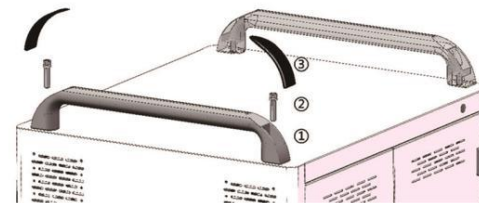
Press down to lock the casters



Lift up to unlock the casters

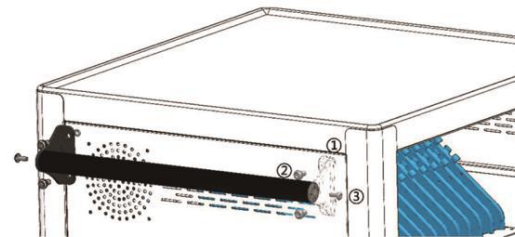
Handrail installation instructions:(Some models require handrails to be installed on site)

A. Integrated armrest installation instructions:



- ① Place the armrest at the corresponding armrest fixing hole of the charging cabinet;
- ② Put the M10 cushion screw through the screw hole of the armrest and fix it to the box body; (use an 8mm wrench);
- ③ Put on the decorative cover; (just snap the decorative cover into the armrest slot and press it down).

B. Installation instructions for split armrests:



- ① Place the armrest bracket at the corresponding armrest fixing hole of the charging cabinet;
- ② Fix the M8 screw through the screw hole of the bracket to the box body; (use a 5mm wrench);
- ③ Pass the M6 screw through the armrest bracket hole to connect and fix the aluminum armrest; (use a 4mm wrench).

Overview of mobile charging cabinets

Main material

The equipment mainly uses steel plates, engineering plastics, electronic accessories and other materials.

Main process

The production process of this equipment mainly adopts processing techniques such as laser cutting, stamping and bending, mold forming, welding, environmental protection spraying, silk screen printing, assembly and testing.

The main function

Mobility---Using high-quality silent casters, easy to push.
 Intelligent charging---Independently develop a multi-functional charging management system for safe charging.
 Equipment protection---The charging compartment is made of high-quality ABS injection molding to reduce equipment wear.
 Auxiliary power supply---a multi-function power supply seat is reserved outside the table body, which is convenient for external equipment.

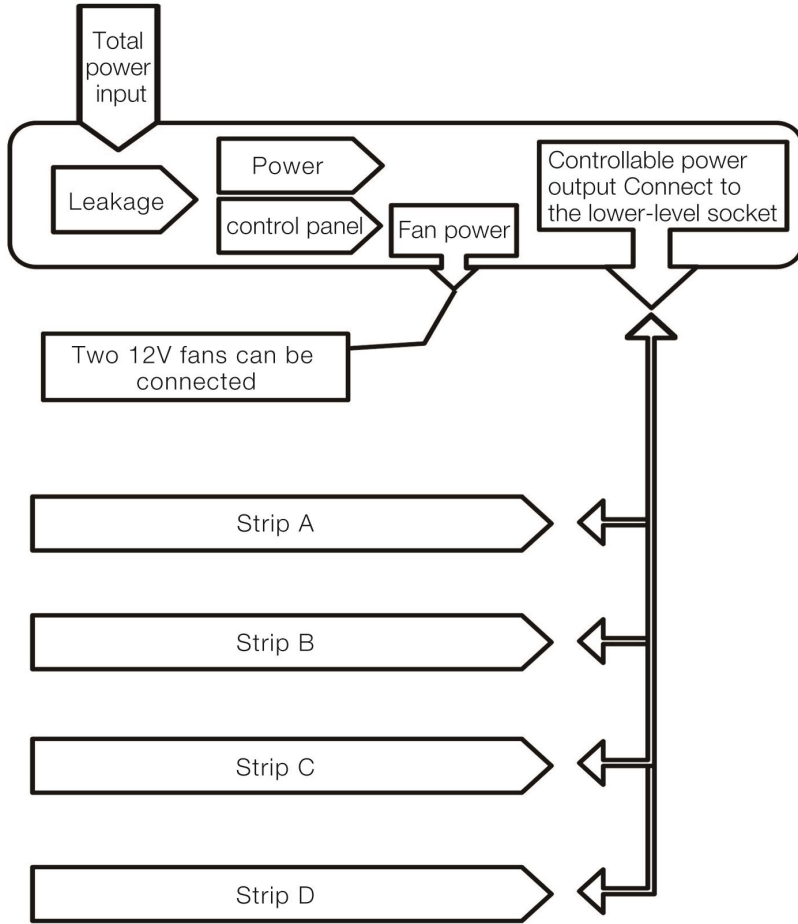
Equipment List

Name	Unit	Qty	Remarks
Charging Cart	Platform	1	
Certification	Package	1	
Service Manual	Book	1	
Inspection Report	Page	1	
Handrail	Cover	1	Some products have been assembled on the charging cabinet products.

Technical Specifications

Part Name	Parameter
Operating Voltage	The input voltage is 220V, and the rated power is 2200W.
Power Cable	≥3*1.5 flat national standard power cord.
Dimensions	Adjust according to the requirements of charging equipment.
Storage trough width	Generally between 26-40mm.
Weight	It depends on the number and size of the equipment. (Generally between 50-100kg).
Caster size	The height of the four-inch casters is 132+3mm.
Packing	Wooden box or carton with wooden bottom.

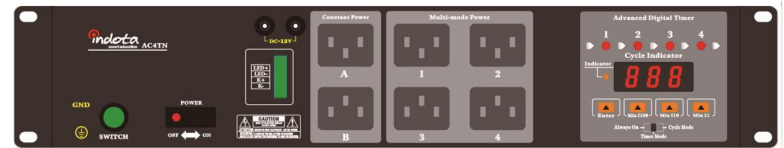
Analysis of the working circuit of the charging cabinet:



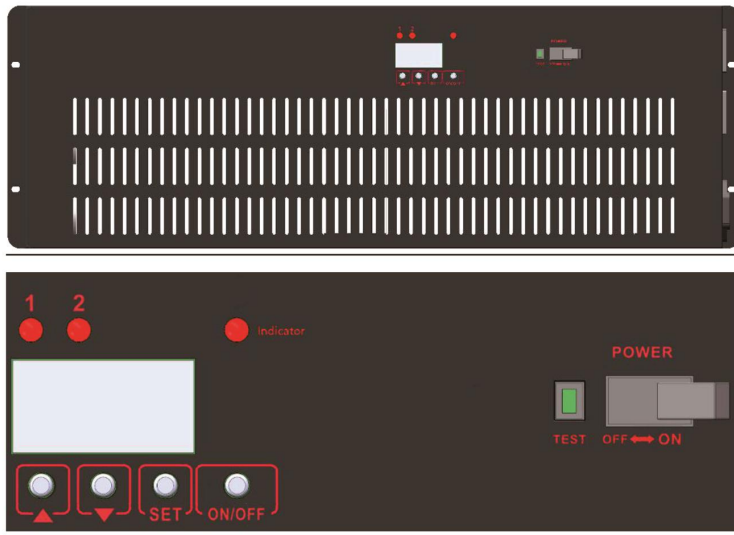
At present, our company mainly has three intelligent sequential power management systems: AC4TN, AC2USBandAC4TL. Among them, AC4TN and AC4TL are mainly used for high-power plug-in charging mode charging cabinets, and AC2USB is mainly used for USB charging mode charging cabinets.

AC4TN sequential power management system

AC4TN sequential power management system is a multifunctional power management system developed for mobile (tablet & notebook) computer charging cabinets. The equipment has sequential power supply, multi-mode timing, overload protection, and digital display in one. (Please refer to the attached page "Operation Guide" for detailed operating instructions of this flagship power manager)



AC2USB sequential power management system



AC2USB is an intelligent timing power management system designed and developed for USB charging & synchronous charging cabinets. It integrates digital display, timing module, leakage and overload protection module, high-power switching power supply module, and realizes efficient optimization of USB charging circuit management.

The default factory setting of the device is the normal power supply mode, and generally does not need to be set. If you need to adjust to the timing mode, set it as follows:

After the power is turned on, press the red ON/OFF to make the sequential power supply enter the off mode (the default program for the sequential power supply is to power on), press the SET button to enter the time timing setting, at this time the digital tube displays numbers and flashes, and then press ▲▼ to adjust the minutes. The setting range is 000-999, and then press the SET key to confirm the timing duration. Finally, press the ON/OFF key to turn on the device;

Note:

- 1、 It is recommended to set the number of minutes not to exceed 300 to ensure that the load equipment can be fully charged while reducing power waste;
- 2、 When the time is set to 000, it is the normal power supply mode;

AC4TL sequential power management system



AC4TL is a timing power manager upgraded from the AC2USB timing management system, and its function is equivalent to AC4TN.

The setting mode is as follows:

Press the SET key in the shutdown state to enter the mode selection state.

In the mode selection state, press ▲ for timing mode, press ▼ for cycle mode;

1. In the timing mode, press SET to enter the timing time setting. At this time, the digital tube displays the number flashing, ▲ is the minute plus, ▼ is the minute minus, the setting range is 000-999, when it is set to 000, the socket is in long power supply mode, and then Press SET to exit the setting state, the digital tube displays the current timing time;

2. In the cycle mode, press SET to enter the cycle digit selection state, the nixie tube flashes, press ▲ or ▼ to select the number of sockets participating in the cycle, for example, set it to 3: socket 1/2/3 respectively cycle power supply, and the digit selection is completed Then press SET again to enter the cycle interval time selection state, press ▲ and ▼ to set the cycle interval time, the setting range is 00-99, after the setting is completed, press SET to exit the setting state.

USB data module:

Using the latest intelligent charging simulation mode, it automatically recognizes all mainstream usb charging devices to ensure fast charging. Three built-in charging simulation profiles correspond to the three mainstream charging protocols: BC1.2 DCP charging protocol, Apple charging protocol, and Samsung TAB charging protocol. Adopt the polling mode with high-precision current monitoring function to ensure the correct identification of the charging protocol of the corresponding charging device;

- Current monitoring: Built-in high-precision current monitoring, real-time monitoring of the charging current of each port;
- Support over-current protection function, when the external charging device or USB line abnormally causes a short circuit, the abnormal port will automatically shut down and cut off the voltage output, which will not affect other normal port charging;

● Led light status indication description:

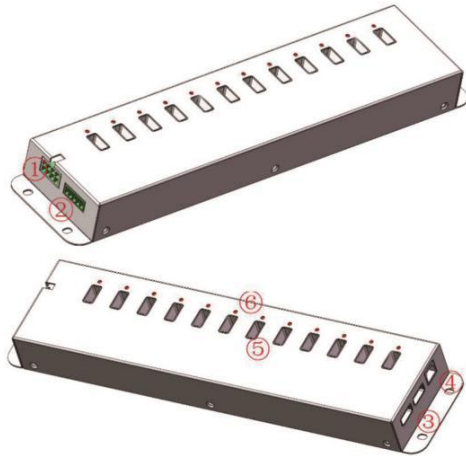
The device is unplugged/not connected-the indicator light goes out;

Charging ----- The red light is on;

Charging is complete-----green light is on;

Synchronous state-----Red and green lights are lit alternately;

Port failure-----Red and green lights flash at the same time
(over current, short circuit,etc.)



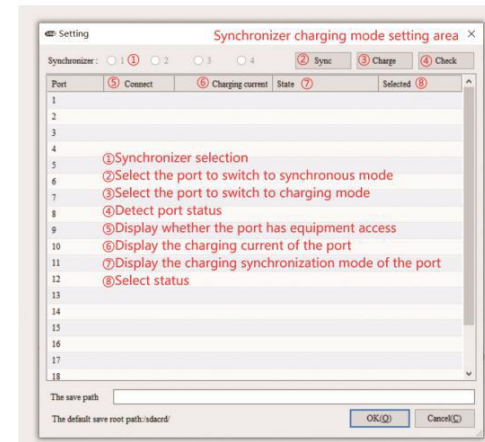
- ① 5V power input
- ② External LED light interface
- ③ Lower-level USB module cascade interface
- ④ Upper-level USB module cascade interface
- ⑤ Tablet interface
- ⑥ LED working status indicator

USB Sync Software

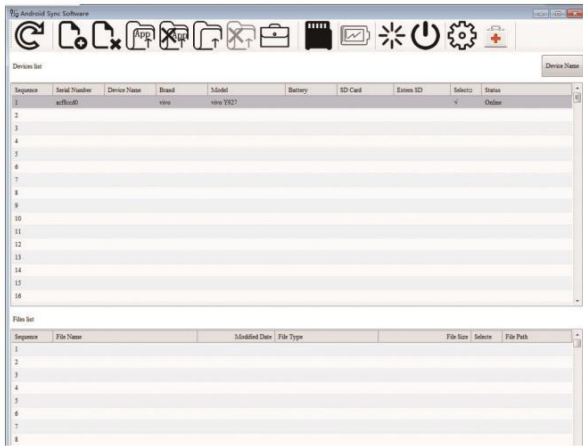
This software runs on a Windows system platform computer, and the data communication communicates with Android devices via USB, which can centrally monitor the brand and model information of Android devices, SD card storage capacity information, and battery power information; centrally send data to all connected Android devices while charging Device, browse device files; restart and shut down the device.

The communication between the software and the device adopts the ADB (Android Debug Bridge) mode. Before connecting the Android device, please make sure to open the "Developer Options" and check the "USB debugging", and allow the computer to connect.

Synchronizer charging mode setting area



USB data synchronization area



Usage Notice

This device is designed with excellent technology and materials, please use it with care. The following suggestions will help maintain the maintenance of your device.

1. Please keep the equipment dry. Rain, humidity, and various liquids or moisture may contain minerals that corrode surfaces and circuits. If the equipment gets wet accidentally, please cut off the power immediately and wipe or wind dry.

2. Please avoid using the device in dusty, messy places or in such places. Movable parts and electronic components may be easily damaged.

3. Do not store the equipment in a high temperature place. High temperature may shorten the life of electronic devices and deform or melt certain plastic parts.

4. Do not store the equipment in a low temperature place. When the device heats up to its normal temperature, moisture may be generated inside it, which may damage the circuit board or other electronic devices.

5. Do not knock or shake the device. Rough methods may damage the internal circuit board or precision structure.

6. Do not use harsh chemicals, cleaning solvents or corrosive cleaning agents to clean the device.

7. Do not place the equipment on an unstable platform to prevent the equipment from tipping over and hurting people, or the equipment itself is damaged.

8. When there is a power failure or the display is not used for a long time, unplug the power plug and cut off the power to prevent the point-use impact caused by the power cord on the equipment.

9. Do not overload the power socket connected to the device or extend the power cord, otherwise it may easily cause fire or electric shock.

10. During the installation and trial process, please do not let any foreign objects fall into the inside of the equipment, so as not to affect the normal operation of the circuit, or short-circuit the parts and cause fire or electric shock.

11. If the equipment breaks down, please do not disassemble and overhaul it without authorization, you should immediately contact the local distributor and service provider to solve it.

12. The power cord is the main power-off device.

13. Please use a soft, clean and dry cloth to clean the surface of the equipment.

14. Please use the accessories or auxiliary parts provided or licensed with the equipment. Unauthorized accessories, especially electronic components, may damage the equipment circuit or movable parts.

15. The equipment should be tested frequently to ensure the stability of the equipment during use.

These recommendations also apply to accessories of this equipment and similar equipment. If the device does not work normally, please go to the nearest authorized service station for repair.

Common Faults and Solutions

A.The fan does not rotate

1. One of the fans does not rotate: check the fan circuit, or replace with a new fan.
2. All fans do not turn: check whether the 12V power supply is powered and whether the fan switch is turned on.

B.The whole machine is not powered on

1. Check whether the main input power cord is well connected.
2. Check whether the leakage protector is opened or damaged (press the leakage protection reset button to see if it has tripped).
3. Check whether the timer is in ON working mode.

C.One of the sockets on the power strip does not work

1. If it is a strong power socket, it needs to be returned to the factory for inspection.
2. If it is a USB socket, the USB cable can be replaced for troubleshooting, but if it still fails, the socket must be returned to the factory for repair.

D.One of the power strips does not work

1. Check whether the power supply line of the power strip is firmly connected.
2. Replace the power supply line for investigation.

E. All power strips are not working

1. Check whether the upper-level manager is on.
2. Check whether the working mode of the upper-level manager is set normally.

F. Trip after power on

1. Change the classroom or check the power strip exclusion method.
2. Disconnect all the lower-level plug-in strips of the sequential power supply to make it empty, and check whether the leakage protection has tripped. If it trips, the sequential power supply may be damaged and the sequential power supply needs to be replaced.
3. If there is no tripping under no load, connect the power cords of the lower-level plug-in strips one by one, and confirm the plug-in strips of the faulty load.

G.The external switch cannot turn off the power

Unplug the desktop switch connection from the timing power supply terminal, and confirm whether the timing power supply is normal according to the green reset switch of the timing power supply. If it is normal, the external switch or connection failure may be caused, and the external switch needs to be replaced. If it is not normal, there may be a problem with the sequential power supply itself.

H.The color of the USB charging cart indicator is inconsistent

The USB charging module is connected to the indicator light. The first connection line is not properly connected and all the lights are off. The third line or the fifth line is inaccurately contacted. All the indicators of this group are red. If the 5th connection line is inaccurately contacted, the traffic lights will flash alternately.

I. USB related issues

1. All green indicators of the USB charging module flash: there is a problem with the 12V switching power supply.
2. The USB charging vehicle trips without load, and it still trips after unplugging the USB plug and indicator module: there is a problem with the 12V switching power supply.

J.The fan of the charging cabinet with temperature control switch does not turn

1. The ambient temperature does not reach the set value of the temperature control switch.
2. There is a problem with the temperature control switch or the connection line.

After-sales service

- ① When you encounter problems in use, do not open the equipment and handle it by yourself to avoid accidents or injuries. Please contact your local dealer in time for handling.
- ② Implement a one-year warranty (man-made damage, natural disasters or tearing off the seal, and incorrectly filling in the warranty card content will be included in the warranty scope). When there is a failure, please contact the local dealer or manufacturer for repair in time to avoid losing the normal warranty service .
- ③ After the warranty period has expired, all paid services will be implemented, and the dealer will charge a reasonable maintenance fee and accessory fee.
- ④ Please fill in the warranty card correctly from the date of purchase to get our normal after-sales service. And keep this manual and after-sales service card properly.